

ADVANTAGES

- Unmatched print quality and significant paper savings
- Air purge optics - enabling consistent target viewing during operation
- Multiple upgrade options
- In front of dryer mounting
- Mount to existing web paths
- Fast & easy Installation
- Intuitive operator work station

CCR+ – product within **Web Process Controls** solution

Closed loop color register controls

The Color-to-Color Register system, CCR+, automatically controls color-to-color register throughout the entire press run. This system is an upgrade to the industry standard MicroTrak CCR, designed with the same or better up-time and reliability.

Imagers are mounted before the dryer, yielding the fastest possible response.

Featuring a high speed 30 pictures per second imaging system and the industry's smallest register marks, CCR+ reduces paper waste while delivering high-quality registered print.

The system automatically seeks and locks on the target without operator intervention right from the start of the press run.

Operators can be trained within one shift to operate the system from the Touch Screen Workstation.

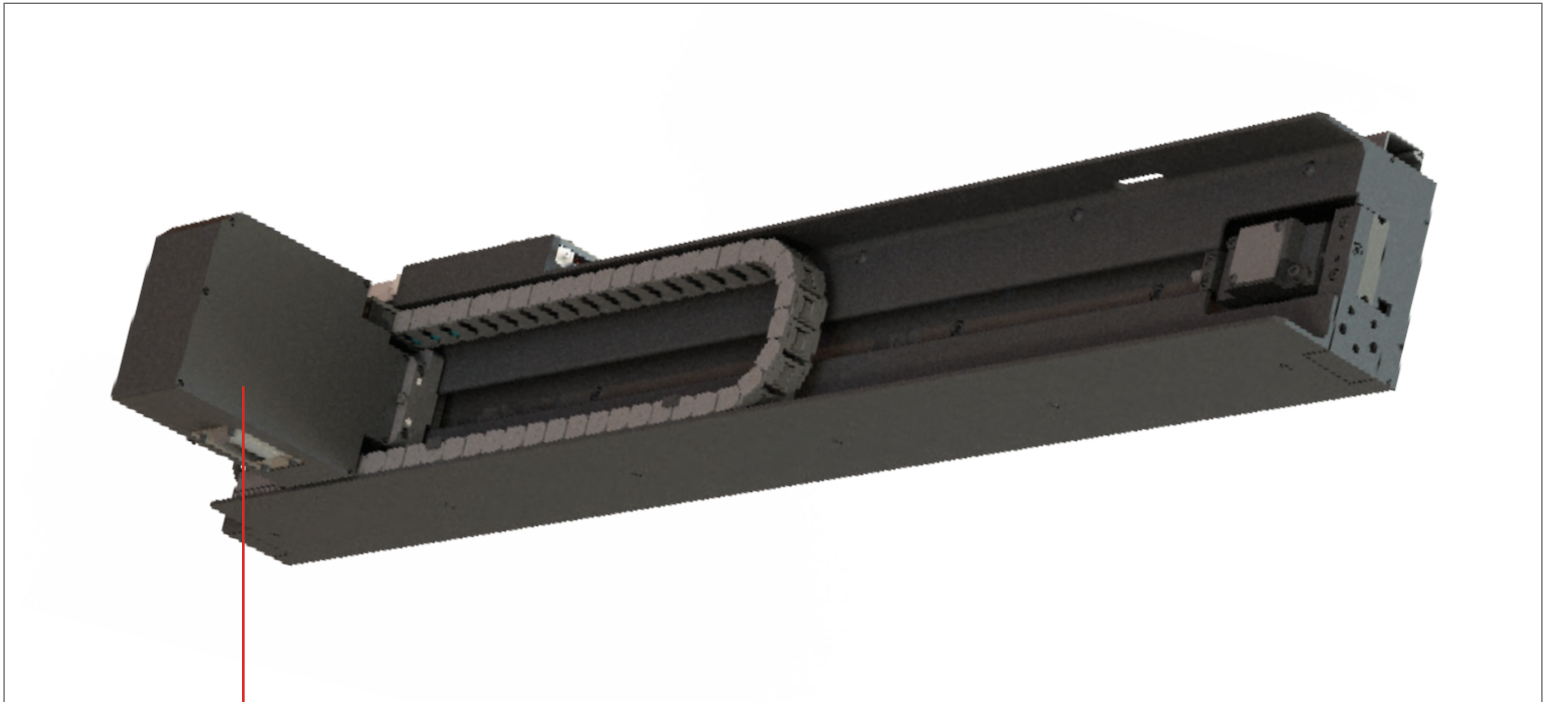
- What our customers are saying -

“

The equipment that we were sold has done everything that it was advertised to do! Our makeready waste counts dropped considerably. They are always there to help in any way we ask.

”

—RANDY MICKELSON, PRESSROOM SUPERINTENDENT, WEB CRAFTERS



Imager

Camera head design with air purge, telecentric lenses, maintenance free design.

Filter Package

Three stage air filter package keeps the camera clean and maintenance free for years.

Drive Assembly

Industrial design high strength belt no exposed internal wires/cables. Self aligning camera connection.

TECHNICAL DATA

- Measurement Accuracy: $\pm 0.001''$ (.03 mm) circ and lat
- Correction Rate: Press Dependent
- Maximum Running Speed: > 3000 fpm (15 m/s)
- Target Space Dimensions: Four color: 0.06'' (1.52 mm)

- Imaging Sensor: Color CCD imager
- Target Calculation: At the geometric center of each target dot
- Mis-Register Detection: All surfaces/target patterns are viewed at the same time

- All mis-register corrected simultaneously
- Web Widths: 20'' (508 mm) to 80'' (2032 mm)
- Call for special web widths

