

## QuadTech® Ribbon Control System with MultiCam®

Commercial

Newspaper

Publication Gravure

Packaging

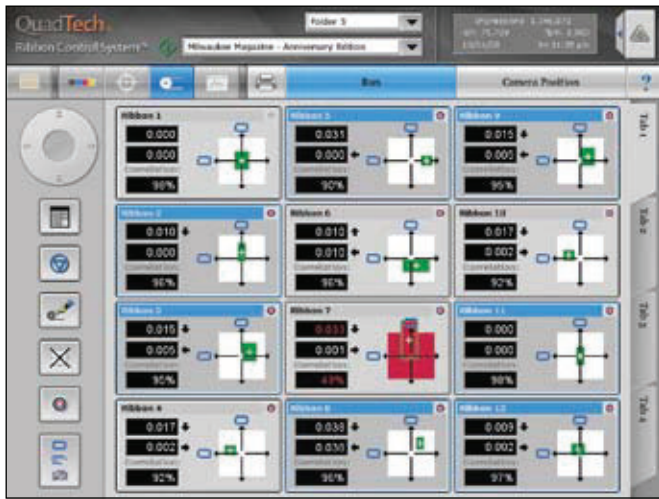
*Are quick makereadies, reduced waste, and improved cutoff and fold register among your top priorities? The advanced QuadTech® Ribbon Control System with MultiCam® is the solution. Combining proven algorithms with a camera offering breakthrough speed and accuracy, this system delivers both unprecedented performance and unmatched value.*

### Peerless performance

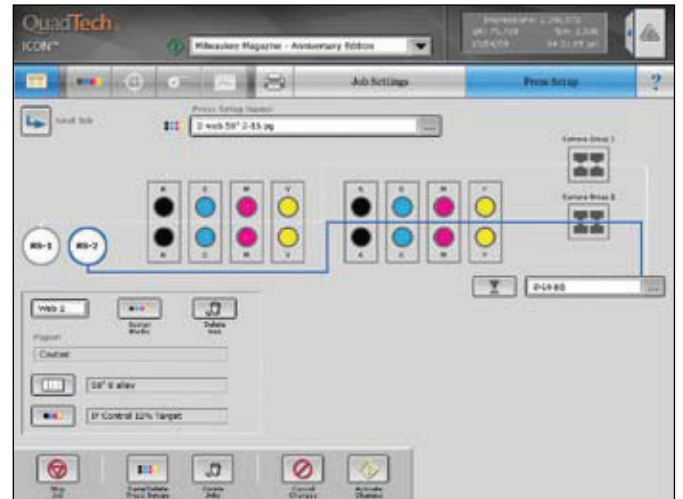
*The QuadTech® Ribbon Control System with MultiCam® can be configured to provide unprecedented performance across the full range of ribbon-control tasks – including everything from cutoff, print-to-cut, print-to-fold and crossover register to the most complex challenges. Whatever the application, this system also enables significant reductions in makeready waste.*

- It resides on the ICON™ platform, which allows all your QuadTech press-control systems to share a single, user-friendly interface.
- The ICON platform also gives your operators instant access to preset parameters for all their saved jobs, greatly streamlining job setup.
- To minimize waste, this system automatically makes angle-bar adjustments during startup, before ink even becomes visible.
- Standard capabilities include interfaces to equipment such as UV coaters, perforators, pattern gluers, folders, and rotary cutters.
- Options include ink-guiding cameras to enable print-to-slitter registration.





Ribbon Control System Run Screen



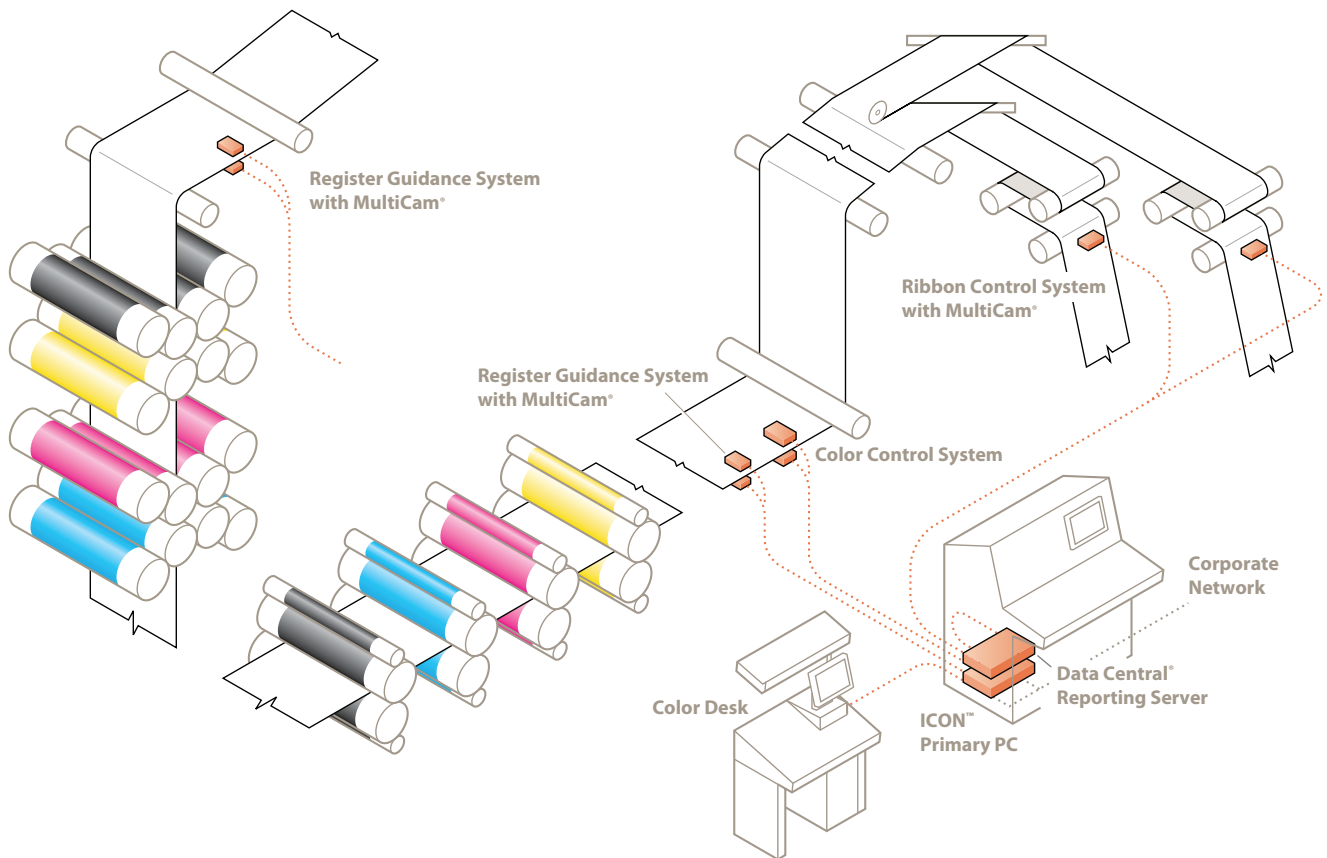
ICON Press Setup Screen

### Breakthrough camera technology

*The Ribbon Control System takes full advantage of our MultiCam® multifunction register camera – a high-performance camera that represents a true breakthrough in register technology.*

- Installing easily with minimal mounting and electrical hardware, MultiCam® provides outstanding print-to-cut and print-to-fold register quality in a compact, low-profile system.
- It identifies register marks as small as 0,50 mm (0.020 in) – among the smallest in the industry.

- It's compatible with our motorized camera transport technology, allowing you to further streamline system setup.
- Using the same proprietary camera design as our Vector® camera, MultiCam® searches for register marks at an industry-leading 30 times per second. One advantage: exceptional control during, and recovery from, web-tension upsets.
- MultiCam® comes complete with our passive OptiGuard™ device, which minimizes the need for camera cleaning – the only maintenance required, thanks to an LED light source that's good for the life of the camera.



### Positioning you for the future

The QuadTech Ribbon Control System is also flexible and affordable. It allows you to choose from a range of enhancements, making it easy to meet your organization's unique requirements both today and for years to come.

- You can incorporate only the features you need today without compromising your ability to add functionality in the future.
- Quantify your high quality and maximize the performance of your equipment with the QuadTech® Data Central® Performance Reporting Module™. With performance data at your fingertips, you'll boost productivity and minimize rebates and make goods.
- To further automate and streamline your printing processes, you can complement your Ribbon Control System with the QuadTech® Register Guidance System with MultiCam® for superb color-to-color register control.

### May we tell you more?

At QuadTech, we're leveraging the knowledge we've gained from our printing heritage to develop innovative solutions for the challenges you face every day. The QuadTech® Ribbon Control System with MultiCam® is just one more example of how we're putting this mission to work on your behalf.

Because we're also committed to achieving the highest standards of quality in our manufacturing and engineering processes, QuadTech is an ISO 9001:2000 registered company.

For details, please give us a call today.

# QuadTech® Ribbon Control System with MultiCam®

## Specifications

<b>Performance:</b>	
Measurement resolution	0.01 mm
Maximum operating speed	17,8 m/sec (3500 ft/min)
Maximum number of controlled units	48 ribbons at a time, 96 motors
Maximum number of motors	200
<b>System Requirements:</b>	
Voltage	100V-240V +/- 10%
Power consumption	Varies based on configuration
Frequency	50 or 60 Hz
Phase	Single Phase
<b>Process Technologies:</b>	
Scanner sensor type	Proprietary Area Array
Registration mark type	Mark or pattern recognition; 3 dot mini mark, RGS V-I reference mark or RGS MultiCam® reference mark
<b>Environment:</b>	
Temperature range	0° C - 55° C (32° F - 131° F)
Maximum humidity	95% noncondensing
<b>Interface Capability:</b>	
	Supports most major press controls
<b>Operator Control Station:</b>	
Type	Universal Touch Screen
Maximum number of operator control stations	12+
Operating System	Microsoft Windows®
Communication means	Ethernet
<b>Certifications:</b>	
	Meets CE Standards
	UL Approved
<b>Options:</b>	
Hardware	Motorized Bars
	Multiple Encoders
	Ink Guiding (ink to slit registration)
	Compensator and angle bar motors
	Optiguards, Active or Passive

Specifications subject to change without notice.



**The Americas**  
United States  
+1 414 566 7500 **TEL**  
sales@quadtechworld.com

**Europe**  
France • Germany • Ireland  
Italy • The Netherlands •  
United Kingdom  
+31 294 496222 **TEL**  
qtesales@quadtechworld.com

**Asia-Pacific**  
China  
+86 21 62882525 **TEL**  
chinasales@quadtechworld.com

India  
+91 79 2642 1863 **TEL**  
indiasales@quadtechworld.com

Tokyo, Japan  
+81 48 839 8831 **TEL**  
tokyosales@quadtechworld.com

Osaka, Japan  
+81 6 6330 0919 **TEL**  
osakasales@quadtechworld.com

Singapore  
+65 6538 3517 **TEL**  
apsales@quadtechworld.com