

QuadTech® Waste Management System

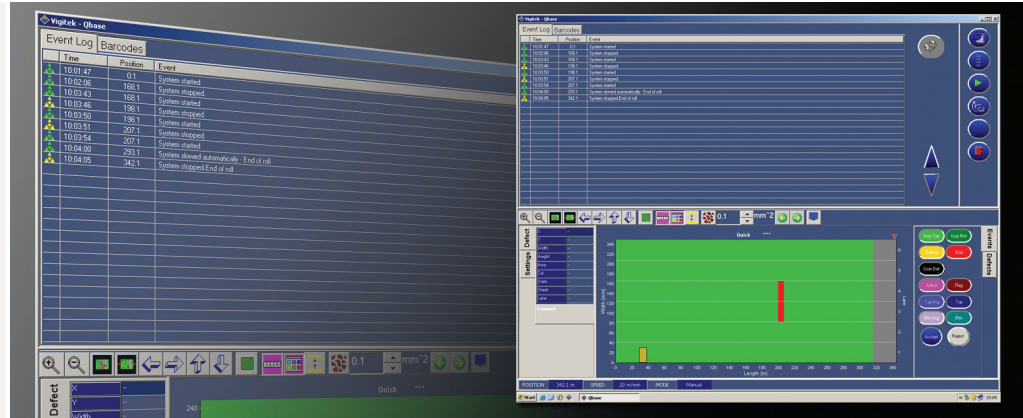
Packaging

Commercial

Newspaper

Publication Gravure

QuadTech Waste Management System automates converting equipment to optimize waste removal.



Waste removal is an integral part of your quality control process. But, it can eat up time and money. Our system interfaces directly with your converting equipment and automates it to optimize waste removal. Efficiency is improved. Costs are reduced.

Automated control for optimized waste removal

The QuadTech Waste Management System transforms waste removal into a fast, accurate process. The system uses the print inspection and process information gathered by your QuadTech® Inspection System and QuadTech® Data Central® for Inspection to perfect your waste removal processes. Dependable, quick, accurate. The Waste Management System keeps waste out of your customers' hands and excess costs out of your operating budget.

Today's competitive environment demands cost reductions at every point. The Waste Management System can increase your converting equipment efficiency by as much as 40 percent. Faster, more efficient waste removal saves you both time and money. The system also verifies your waste removal process with work order and product reports.

- **Reduced costs.** Pinpoint accuracy enables precise waste removal and eliminates wastage of quality product.
- **Increased productivity.** Defect location data speeds up the waste removal process by allowing the

operator to fast-forward to the exact location of the defect.

- **Unmatched efficiency.** Defect identification is faster with the system's defect image recording. With a full color image of the defect, the operator is able to make a more informed decision rapidly.
- **Unsurpassed quality control.** The Waste Management System automatically optimizes the waste removal process for your converting equipment.
- **Absolute traceability.** Work order and product reports complete the audit trail for your production and waste removal processes.
- **Adaptable.** Built to open standards, the system integrates fully with your existing converting equipment.
- **Unequaled Control.** With printable roll and job reports, the Waste Management System gives you unparalleled access to the data you want. List data on every defect or just print a high-level overview. You can also export reports to be analyzed by third-party statistical tools to help identify unwanted production trends.

QuadTech® Waste Management System

Specifications

Performance:

Processing	Intel® Pentium® CPU
Operating system	Microsoft® Windows®

System Requirements:

Voltage	100V-240V +/-10%
Power consumption	3.5 kVA
Frequency	50 or 60 Hz
Phase	Single phase

Environment:

Temperature range	5° C - 35° C (41° F - 95° F)
Maximum humidity	90% non-condensing

Interface Capability:

Slitter/rewinder interface board

User Interface:

Type	TFT touch screen
Operating system	Microsoft® Windows®
Location	Self-contained free-standing enclosure
Dimensions	Height: 1520 mm
	Width: 600 mm
	Depth: 600 mm

Certifications:

Meets CE Standards

Intel and Pentium are registered trademarks of Intel Corporation
Microsoft and Windows are registered trademarks of Microsoft Corporation

QuadTech enhances your competitive edge with powerful, performance proven solutions that boost quality and efficiency, reduce waste and increase your profitability.

For details, contact your QuadTech representative.



The Americas
United States
+1 414 566 7500 **TEL**
sales@quadtechworld.com

Europe
France • Germany • Ireland •
Italy • The Netherlands •
United Kingdom
+31 294 496222 **TEL**
qtesales@quadtechworld.com

Asia-Pacific
China
+86 21 62882525 **TEL**
chinasales@quadtechworld.com

India
+91 79 2642 1863 **TEL**
indiasales@quadtechworld.com

Tokyo, Japan
+81 48 839 8831 **TEL**
tokyosales@quadtechworld.com

Osaka, Japan
+81 6 6330 0919 **TEL**
osakasales@quadtechworld.com

Singapore
+65 6538 3517 **TEL**
apsales@quadtechworld.com